

ingenhoven architects + Architectus

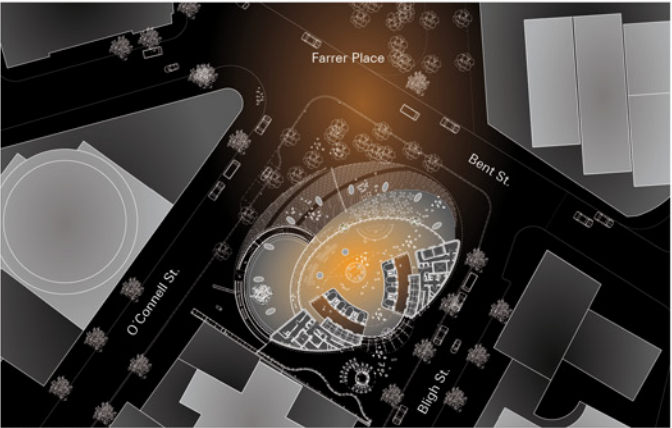
1 Bligh Sydney



Studio Ingenhoven architects, Düsseldorf



Image 1: Planning process



General view, ground level

Christoph Ingenhoven founded the architectural studio ingenhoven architects in 1985. His office has won numerous first prizes in international competitions and architectural awards for completed buildings.

The studio is located in Düsseldorf's "Media Harbour" and employs some 100 architects, interior architects, draughts men and model makers. The practise is well known for its open work atmosphere that emphasizes teamwork and communication. Essential for Christoph Ingenhoven's work are an ecological and sustainable approach, the wellbeing of the users, technical innovation, flexibility and efficiency, logical structures and a precise finish.

The range of ingenhoven architects' work includes headquarters for global companies, high-rise towers, department stores, office buildings, higher education and research buildings, residential buildings, manufacturing and infrastructure projects, urban design and revitalization projects as well as product/industrial design and interior architecture.

ingenhoven architects is experienced in working internationally on the design and execution of large, innovative projects in Germany, Europe, East-Asia, North-America and Australia. The office often collaborates with a local team of partners and established experts and advisors.

For all projects, ingenhoven architects are present on site. With offices in Switzerland, Australia, Singapore and the USA the high quality of execution can be guaranteed.

The most important projects include the new Headquarters of the European Investment Bank in Luxembourg, the Lufthansa Aviation Center at Frankfurt/M. Airport, Germany and the Breezé Tower in Osaka, Japan. The new Office Building of the Daniel Swarovski Corporation in Zurich and the "Oeconomicum" School of Economics at the University of Düsseldorf have recently been completed. This fall the 1 Bligh Tower in Sydney's Central Business District was inaugurated. Currently the office works on projects in Singapore and the new Google Headquarters in California.

Further information under:
www.ingenhovenarchitects.com



1Bligh combines leading edge design, technology and sustainability

In the heart of Sydney's financial precinct, the 139m tall 1Bligh tower combines leading edge design, technology and sustainability. The building's compact geometry and a slight rotation open the view to the world famous Harbour Bridge while allowing the placement of a strong corner emphasis. This is combined with the main entrance location to provide a strong address for 1 Bligh in a way that directly responds to its urban context.

The ground floor lobby creates a new hub of activity and interaction making 1 Bligh a natural point of convergence. A large grand staircase and two cafes offer a perfect place to meet or enjoy lunch. A child care facility with an outdoor play area provides a place for young children to enjoy. Change rooms with showers and lockers are provided for active tenants.

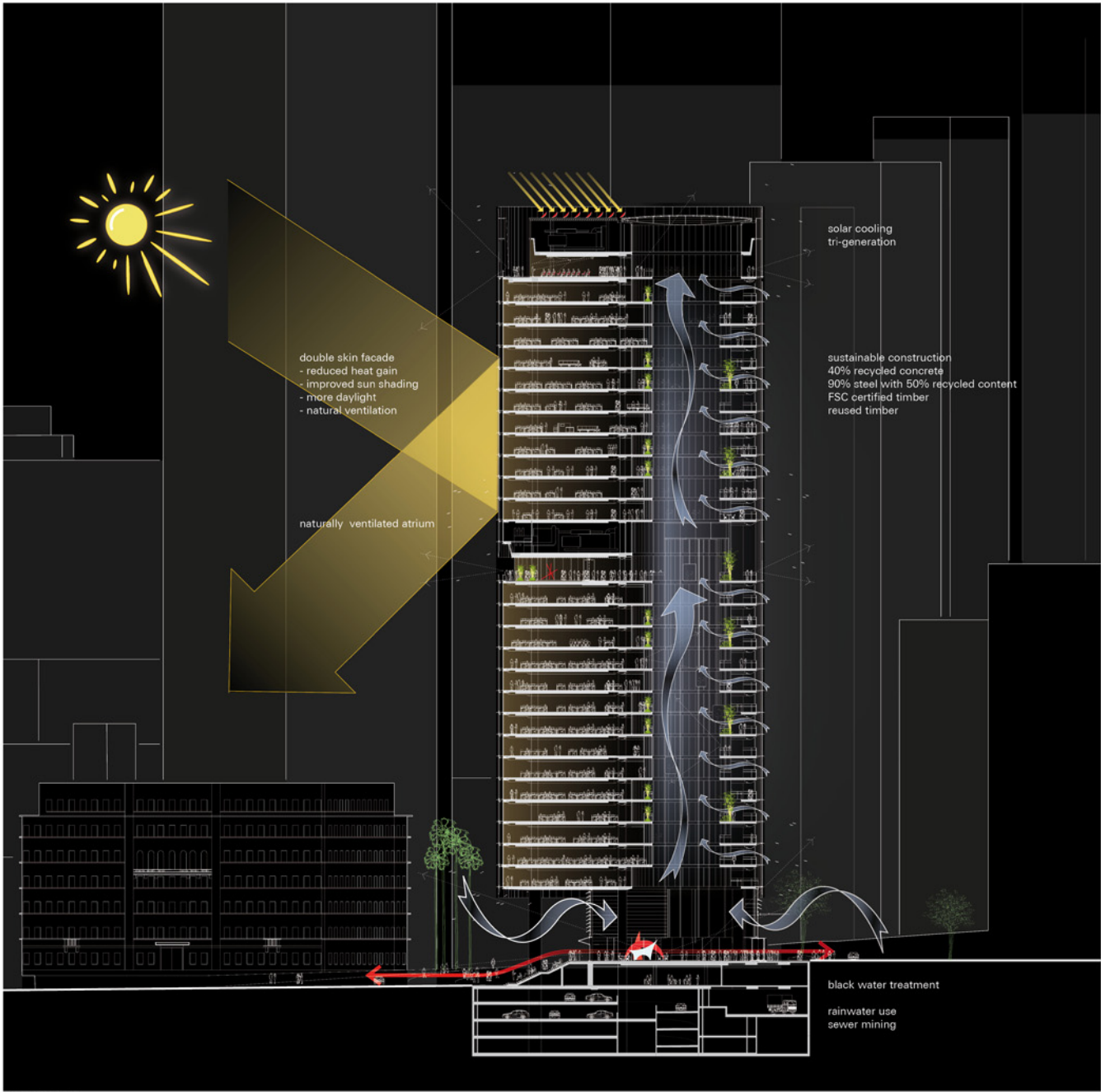
Australia's tallest naturally ventilated glass atrium soars the full height of the building, providing a consistent flow of fresh air and a sense of openness on every floor enhancing communication, connection and community. Another special spot is the winter garden with harbour view at level 15 as well as the large roof top terrace at level 28.

The structure delivers consistent large floor plates of up to 1600m² and achieves 92% efficiency NLA to FSA. The elliptical plan is 12% more efficient than a rectangular building in facade to floor area and allows excellent natural light penetration.

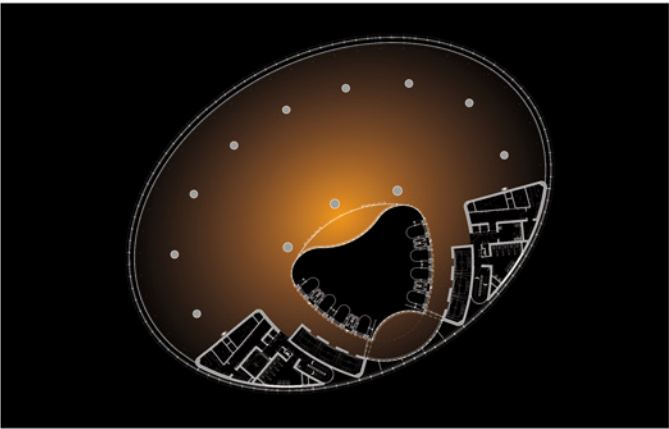
1 Bligh is the first high-rise office tower in the southern hemisphere to feature a double-skin glass facade. An outer glass skin protects computer-controlled sun shades, shielding the double glazed curtain wall from the sun, whilst reflecting natural light into the building.

The sustainability strategies were designed to achieve a 6 Star Green Star Certified Rating and 5 Star NABERS Energy Rating. 20% of all aggregate used in concrete is recycled, 41% of all cement required for the structure has been replaced with industrial waste by-products and 90% of the steel used has a recycled content greater than 50%. All timber used is either FSC Certified or re-used from a previous application. 1 Bligh incorporates an innovative tri-generation system that uses gas and solar energy to generate cooling, heating and electricity on site. Waste water from the building and Sydney Water sewer is treated on site for toilet flushing and make up water to the cooling towers. A rainwater tank recycles rainwater for irrigation. As a result of these systems sewage emissions have been reduced by 90%.

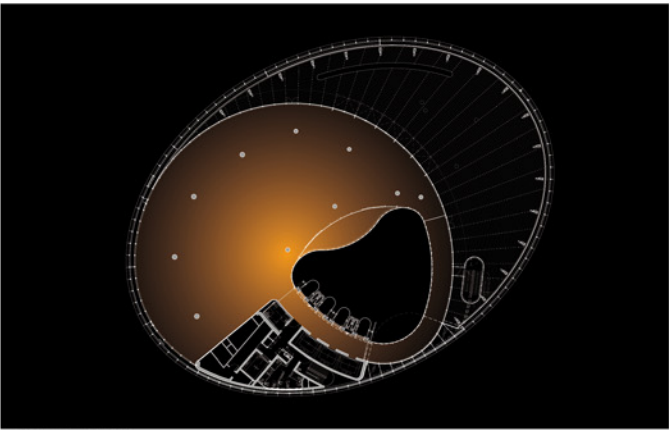
ingenhoven architects + Architectus



Australia's tallest naturally ventilated glass atrium



Typical floor, Scale 1:500



Roof level 28, Scale 1:500



First high-rise office tower in the southern hemisphere to feature a double-skin glass facade



A large grand staircase, two cafes and child care facility at ground floor



The large roof top terrace at level 28



winter garden with harbour view at level 15

First high-rise office tower in the southern hemisphere to feature a double-skin glass facade with Australia's tallest naturally ventilated glass atrium

1 Bligh, Sydney
international competition 2006, 1st prize
Execution 2009 - 2011
Client DEXUS Property Group, Sydney
Architects ingenhoven architects + Architectus
GFA 45,760 m²
Levels 28
Height of building 135.5m
Atrium height 130m
Project value A\$270million



Green Building
6 Star Green Star Office Design V2 - Green Building Council of Australia; NABERS Energy Rating - Designed to achieve a 5 Star NABERS Energy Rating

Public Artwork
Day In Day Out, 2011, James Angus; Aluminium, stainless steel, enamel paint, 959 x 2011 x 617 cm; Collection: DEXUS Property Group/Cbus Property

Awards
DEXUS/City of Sydney design competition winner 2006; UDIA (NSW) Awards for Excellence - Retail/Commercial Development 2011; Asia Pacific International Property Awards - Highly Commended - Office Architecture + Office Development 2011; Chicago Athenaeum International Architecture Award 2008

Team
Structural Engineering - Enstruct Group, Milsom's Point, Australia
Facade Consultant - DS-Plan AG, Stuttgart, Germany; Arup Facade with Enstruct
Ecologically Sustainability Design - Cundall, St Leonards, Australia
Fire Protection - Arup Fire Engineering, Sydney; Steve Paul & Partners, Sydney
Acoustic - Arup Acoustic, Sydney
Electrical Services - Arup Electrical, Sydney
Lighting Artificial - Arup Electrical, Sydney; Tropp Lighting Design, Weilheim, Germany
Landscape Architecture - Sue Barnsley Design, Sydney
Traffic Engineering - Masson Wilson Twiney, Chatswood, Australia
Transportation Systems - Norman Disney and Young, Sydney
Mechanical Services - Arup Mechanical, Sydney
Hydraulics - Steve Paul & Partners, Sydney
Project Management - APP Corporation, Sydney