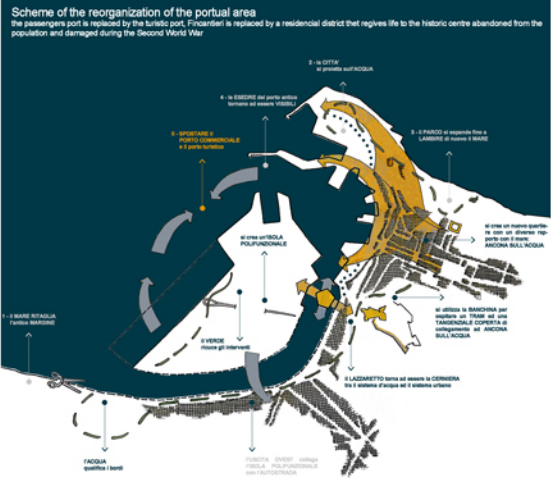


view of the district from the Corridore of Traiano arch (central wharf); the Second Exedra (Greek port)  
the district is similar to the dense districts of the historic centre of Ancona where the houses are built one next to the other and at different levels



I chose the portual area of Ancona as subject of my project because of the conditions of the area; of the publication of the new p.r.p. that contemplates to continue the sea cementification and of the news of the abandon by Fincantieri in 2022 of the area of the port that the industry occupy since 1920.

The conviction that the future of construction is in the **RECYCLE of THE ABANDONED BUILT HERITAGE**, not in the urbanization of new areas, led me to a requalification and functional reorganization, and to provide the construction of a new, dense, central district in the Fincantieri area, opposed to the increasing urban sprawl episodes that occur in Ancona territory.

The aim is to **REPOPULATE THE ABANDONED CENTRE OF THE CITY, STOPPING THE CRAZY URBANIZATION** of unfamiliar houses and shopping malls villages, that provoke pollution (because of the consequent major use of cars) and enormous **CONSUMPTION OF SOIL**.

The way to do that is to move the passengers port from the centre to the industrial area, and to replace it with the turistic one, so it will be possible to reduce the quantity of cement lying on the sea (the turistic port needs less space), regaining the **EQUILIBRATE RELATION BETWEEN THE CITY AND ITS NATURAL ENVIRONMENT**: the sea. This restores the historical landscape, solves the pollution problem of the centre of the city and gives the opportunity of opening attracting facilities **TO SOLVE THE PROBLEM OF THE CRISIS** of little central shops that can't win the competition against shopping malls.

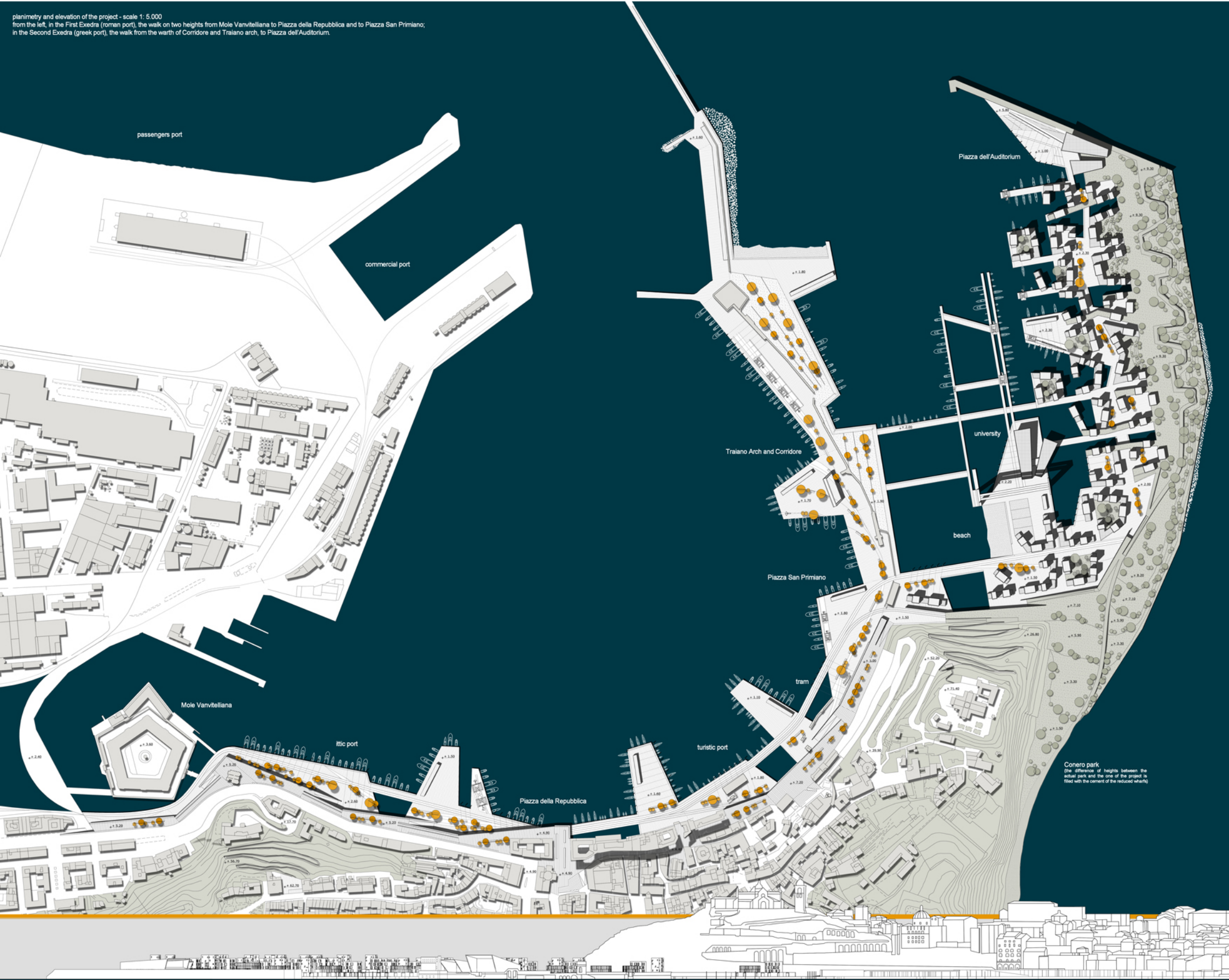
The architectural project starts with a pedonal walk on two heights, that lodges the viability of iron (to connect the district ecologically), and fotovoltaic suspended panels that repair from the sun during day and light during night.

The promenade reaches Guasco hill where it leads to the new residential district, designed in continuity with the sea and following **AMBIENTAL SUSTAINABILITY CRITERIAS**: the orientation is studied to protect the residences from the north winds with the park, and to put the glass windows to the south; the windows to help natural ventilation, and it is provided to use fotovoltaics and sea geotermly.

The design of district and promenade is inspired by Ancona's **HISTORICAL LANDSCAPE**, a city fortified to protect from the sea, with a wall of base for ancient palaces, crowned by Cardeto park: the district too is characterized by the presence of a commercial base that holds the residential buildings, crowned by Conero park.

Both the projects of promenade and district suggest the thesis of the project: it's possible to provide a **SUSTAINABLE DEVELOPMENT** for Ancona and its portual area, regaining its historical landscape, in the conviction that a sustainable architecture is not just a tecnologically innovative one, but an architecture able to respect the environment, the landscape, the history and the traditions of the site in which it is situated; so that it's possible to **GIVE THE NEXT GENERATIONS A CITY THAT MAINTAINED ITS IDENTITY** along the centuries.

planimetry and elevation of the project - scale 1: 5.000  
from the left, in the First Exedra (roman port), the walk on two heights from Mole Vanvitelliana to Piazza della Repubblica and to Piazza San Primiano;  
in the Second Exedra (greek port), the walk from the warth of Corridore and Traiano arch, to Piazza dell'Auditorium.



International Prize for Sustainable Architecture  
2013 Competition - Degree Theses Division



Thesis title: Requalification and functional reorganization of the portual area of Ancona and focus on a residential district on the  
Thesis author/s: Margherita Gavazzi  
Supervisor/s: Prof. R. A. Cherubini, Arch. A. Esposito, Prof. S. F. Zevi  
Faculty - University - Country: Facoltà di Architettura, Università La Sapienza di Roma, Italia





Prospetto della città di Ancona - L. Doufur - 1835 (Archivio di Storia Urbana di Ancona)



Contemporanean elevation of Ancona



Elevation of Ancona - project

Subject of the investigation: The topic of the investigation is about the necessity of finding a way of **sustainable development for a city that**, during the past 70 years, **has lost her traditional and historical landscape, so its identity.**

Aim of the investigation: The aim of the investigation is demonstrating that it's possible to find a way of a **sustainable development** for Ancona, and particularly for its port, regaining its historical landscape; in the conviction that a sustainable architecture is not just a technologically innovative architecture, but, above all, an architecture which is able to **respect the landscape, the environment, the history and the traditions of the site** in which it is situated.

Criteria of sustainability of the investigation: The criterias of sustainability of the investigation are not just the energetic ones, but, above all, the attention to design a project able to insert itself in the stratigraphy of this city and to **restore its original landscape: a project that comes from the city itself.**



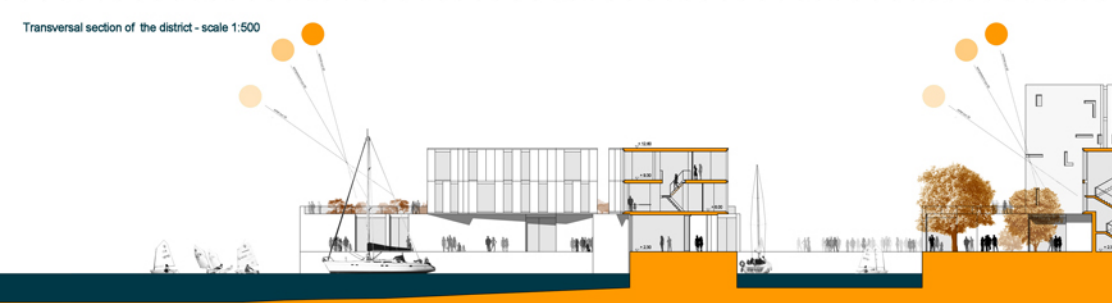
Longitudinal sections of the district - scale 1:1.000



plans of the three typologies of residential buildings of the new district - scale 1: 200  
there are three different typologies of buildings in the project: the urban villa, the buildings with 3 medium apartments and the towers with 4 small apartments. the typologies are thought to allow to every kind of people to live in the district, and not just to the rich ones.



view of the wharf from the terrace on the second floor of the urban villa  
the analysis demonstrate that the people who live in Ancona want to live in the urban villa or in the urban villa with some outside space (terrace or garden); this promotes the abandon of the city centre in favor of urban sprawl. for this reason many of the residential buildings are identical urban villas that have a terrace or a roof garden over the commercial base.



Transversal section of the district - scale 1:500

