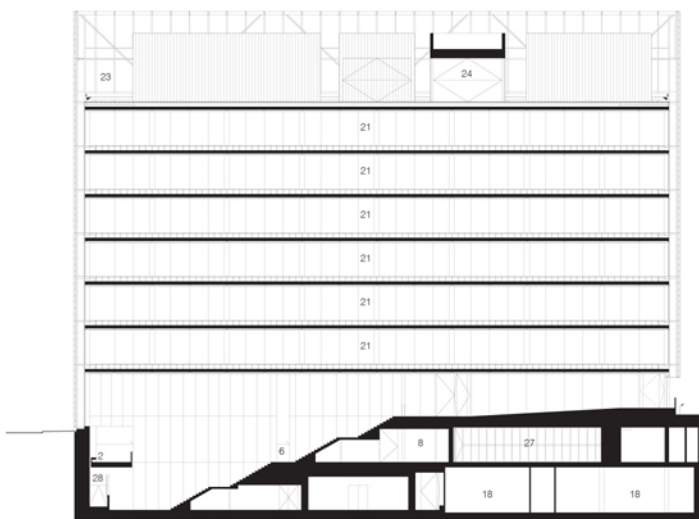


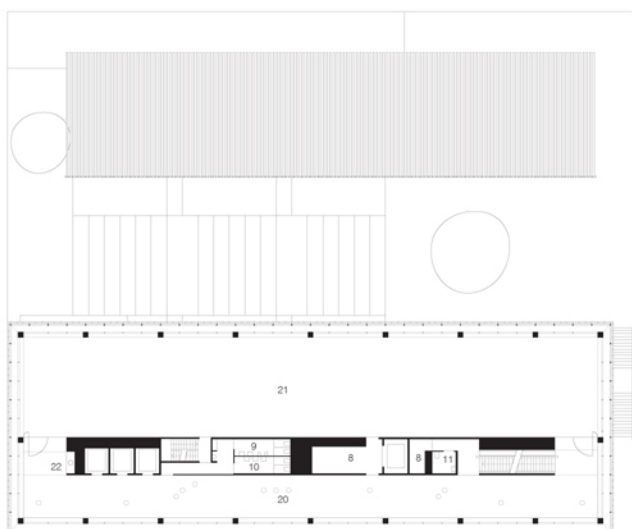
SECTION A



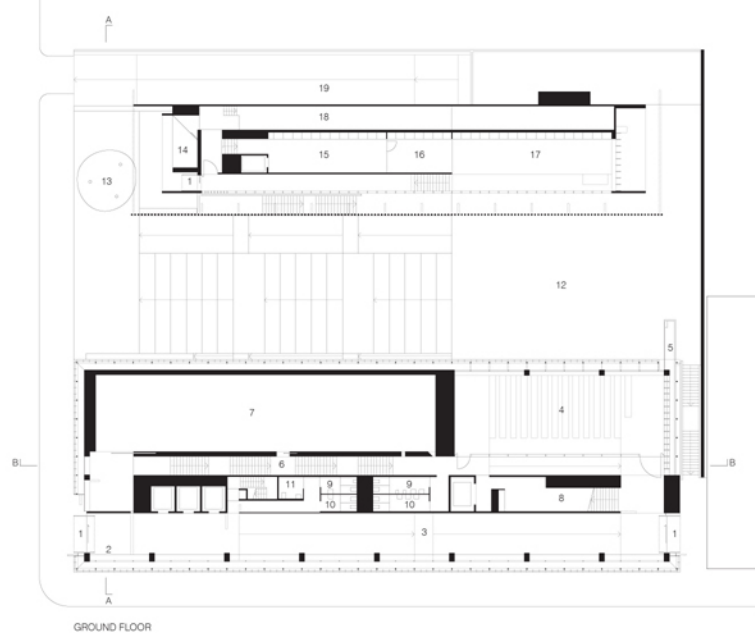
SECTION B



LEVEL 7



LEVEL 1



GROUND FLOOR

Sean Godsell Curriculum Vitae



Sean Godsell was born in Melbourne in 1960. He graduated with First Class Honours from The University of Melbourne in 1984. He spent much of 1985 traveling in Japan and Europe and worked in London from 1986 to 1988 for Sir Denys Lasdun. In 1989 he returned to Melbourne and worked for The Hassell Group. In 1994 he formed Godsell Associates Pty Ltd Architects.

He obtained a Masters of Architecture degree from RMIT University in 1999 entitled 'The Appropriateness of the Contemporary Australian Dwelling.' His work has been published in the world's leading Architectural journals including Architectural Review (UK) Architectural Record (USA) Domus (Italy) A+U (Japan) Casabella (Italy) GA Houses (Japan) Detail (Germany) Le Moniteur (France) and Architect (Portugal).

He has lectured in the USA, UK, China, Japan, France and New Zealand as well as across Australia. He was a keynote speaker at the Alvar Aalto symposium in Finland in July 2006.

He has received numerous local and international awards. He received the ar+d award in 2003. In 2006 he received the Victorian Premier's Design Award and the RAIA Robin Boyd Award and in 2007 he received the Capochin residential architecture award in Italy and a Chicago Athenaeum award in the USA. In 2009 he received a Chicago Athenaeum International Architecture award and Good Green Design award along with a Detail magazine Detail Preis award.

He is currently working on projects in China, Chile and Australia and his first major building, the RMIT University design Hub, a post graduate research centre for design, was recently completed in Melbourne.

RMIT Design Hub Architect's Statement

The purpose of the Design Hub is to provide accommodation in one building for a diverse range of design research and post graduate education. RMIT is a world leader in design research however post graduates are currently dissipated across various campuses and facilities. The Hub provides a collegial research base where post graduates in fields such as fabric and fashion design will work alongside those involved in architecture, aeronautical engineering, industrial design, landscape architecture, urban design and so on.

Research groups have the ability to locate and fine tune their accommodation within 'warehouses' - open plan spaces where research teams can set up and tailor their work environment to suit their particular needs. The plan of the Hub acknowledges the desire for incidental cross pollination where researchers from one field encounter those from completely unrelated other fields as part of their day to day use of the building. An exhibition space and design archive provide a public interface with both industry and research outcomes. These spaces combined with a variety of lecture, seminar and multi purpose rooms facilitate high level exchanges in a number of forums.

The Hub has a large number of ESD features and incorporates strategies of water, waste and recycling management that are the equal of any ESD focussed building on the planet. In particular the outer skin of the Hub incorporates automated glass sunshading cells that include solar power infrastructure, evaporative cooling and fresh air intakes that improve the internal air quality and reduce running costs. The cells been designed so that they can be easily replaced as research into solar energy results in improved technology and part of the northern façade is actually dedicated to ongoing research into solar energy to be conducted jointly by industry and RMIT. The entire building façade, in other words, has the capacity to be upgraded as solar technology evolves and may one day generate enough electricity to run the whole building.

Sean Godsell

Project	RMIT Design Hub
Location	Melbourne Australia
Dates	2006 – 2012
Greenstar rating (Australia)	5 star Greenstar rated
Building Area	13,000 sq m
Client	RMIT University
Architect	Sean Godsell Architects Sean Godsell Hayley Franklin
Architect in Association	Peddle Thorp Architects Chris Godsell James Hampton Raf Nespoli
Structural & Civil engineer	Felicetti Pty Ltd
Services Engineer	Aecom
Quantity Surveyor	Davis Langdon
Building Surveyor	Phillip Chun and Associates
Landscape	Sean Godsell Architects
Interior Design	Sean Godsell Architects
Façade Contractor	Permasteelisa Pty Ltd
Project Manager	Aurecon Pty Ltd

Legend	
1 entry	16 meeting room
2 seat	17 void
3 lobby	18 plant room
4 lecture theatre	19 vehicle ramp
5 speaker's balcony	20 long room
6 stair	21 warehouse
7 exhibition room 1	22 kitchenette
8 store room	23 roof terrace
9 male bathroom	24 pavilion
10 female bathroom	25 kitchen
11 accessible bathroom	26 light scoop
12 forecourt	27 cafe
13 sculpture mound	28 display ramp
14 display window	29 exhibition room 2
15 permanent archive	30 display area

0 1 5 20m

